

4 [ES] Leggi il brano e rispondi alle domande.

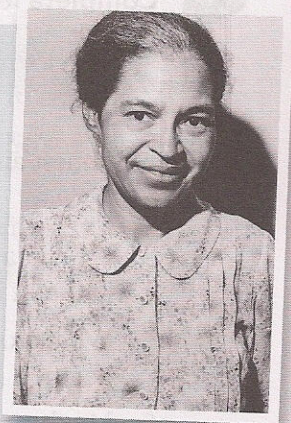
December 1<sup>st</sup> 1955 will always be remembered as an important date in the history of the Civil Rights Movement in the US because on that day Rosa Parks, a black woman aged 42, refused to give up her seat to a white passenger on a bus in Montgomery, Alabama.

Rosa Parks was coming back home after a hard day's work at the local department store. At the time, black people had to sit in the back of buses and if the bus **filled up with** people, the bus driver had to reposition the movable sign which divided the black and white sections, so that more white people could find a seat.

That's exactly what happened on that very special day in 1955, but Rosa Parks didn't obey the bus driver and she was arrested. She had the courage to stand up for her rights as she was tired of being humiliated and discriminated.

Actually, Rosa Parks' action was not the first of this kind, but it started the Montgomery bus boycott. For more than a year (381 days), black people boycotted the local bus company. In November 1956, the US Supreme Court established that segregation was **unlawful** and that was the end of the bus boycott. After that, Rosa Parks lost her job and so did her husband. They therefore moved to Virginia.

Rosa Parks died in 2005 at the age of 92. Her **coffin** was placed in the US Capitol for two days, which is an honour usually reserved for American presidents when they die. Thousands of people paid their respects and the event was even broadcast on TV.



**Glossario**

**fill up with** = riempirsi di

**unlawful** = illegale

**coffin** = feretro, bara

- 1 When was Rosa Parks born?  
.....
- 2 What happened on December 1<sup>st</sup> 1955?  
.....
- 3 Where did Rosa Parks work?  
.....
- 4 Why did the bus driver reposition the sign that divided the black and white sections on the bus?  
.....
- 5 Was Rosa Parks' action the first of this kind?  
.....
- 6 How long did the bus boycott last?  
.....
- 7 What did the US Supreme Court establish?  
.....
- 8 Why did Rosa and her husband move to Virginia?  
.....
- 9 How old was Rosa Parks when she died?  
.....
- 10 Where was her coffin placed?  
.....
- 11 Did you know Rosa Parks before?  
.....
- 12 Do you know other important women that had such a big impact on history? Who?  
.....

